



556/21



556/22



556/23



556/24



556/25



556/26



556/27



556/28



556/29



556/30



556/34



556/35



556/36



556/37



556/38



556/39



556/40



556/41



556/42



556/43



556/44



556/46



COLOGNE, ISSUE 3

VICTORINUS
TRIER, ISSUE 1



556/47



556/48



557/1



557/2



557/3



558/1





558/2



558/3



558/4



558/5



558/6



559/1



560/1



560/2



560/3



560/4



560/5



560/6



560/7



560/8



560/9



560/10



560/11



560/12



560/13



560/14



560/15



560/16



560/17



560/18



560/19



560/20



560/22



560/23



560/24



560/25



560/26





560/27



560/28



560/31



560/32



560/33



560/34



560/35



560/37



561/1



561/2



561/3



561/4



561/5



561/6



561/7



561/8



561/9



561/10



561/11



561/12



561/13



561/14



561/15



561/16



561/17



561/18



561/19



561/20



561/21



561/22





561/23



561/28



561/29



561/30



561/31



TRIER, ISSUE 2



561/32



562/2



562/3



562/4



562/5



562/6



562/7



562/8



562/9



562/10



562/11



562/12



562/13



562/14



562/15



562/16



562/17



562/18



562/19



562/20



562/21



562/22





562/23



562/24



562/25



562/27



562/28



562/29



562/30



562/31



562/32



562/33



562/34



562/35



562/36



562/37



562/38



562/39



562/40



562/41



562/42



562/43



562/44



562/45



562/46



562/47



562/48



562/49



562/50



562/51



562/52



562/53



562/59



562/60





562/61

562/62

562/63

562/64

562/66

562/67



562/68

562/69

563/1

563/2

563/3

563/4



563/5

563/6

564/1

564/2

564/3

565/1



565/2

565/3

565/4

565/5

565/9

566/1



566/2

566/3

566/4

567/2

567/3

567/4



567/5



567/6



567/7



567/8



567/9



567/10



567/11



567/12



567/13



567/14



567/15



567/16



567/17



567/18



567/19



567/20



567/22



567/24



567/26



568/2



568/3



568/4



568/5



568/6



568/7



568/8



568/9



568/10



568/11



568/12



568/13





568/14



568/15



568/16



568/17



568/18



568/19



568/20



568/21



568/22



568/23



568/24



568/25



568/26



568/27



568/28



568/29



568/30



568/31



568/32



568/33



568/34



568/35



568/36



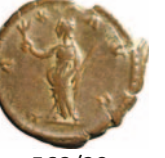
568/39



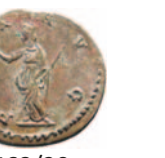
568/40



569/2



569/3



569/4





569/5



569/6



569/7



569/8



569/9



569/10



569/11



569/12



569/13



569/14



569/15



569/16



569/17



569/18



569/20



569/21



569/22



569/23



569/24



569/25



569/26



569/27



569/28



569/29



569/30



569/31



569/32



569/33



569/34



569/35



569/36





569/37

569/38

569/39

569/40

569/41

569/42



569/43

569/44

569/48

569/49

569/50

569/51



569/52

569/54

569/55

569/56

569/57

TRIER, ISSUE 3



570/1

570/2

571/1

571/2

572/1

573/1



573/2

573/3

573/4

574/1

574/2

575/1





576/1



576/2



576/3



576/4



576/5



576/6



576/7



577/1



577/2



577/3



577/4



578/1



578/2



578/3



579/1



579/2



580/1



580/2



580/3



580/4



580/5



581/1



581/2



581/3



581/4



581/5



581/6



581/7



581/8



581/9





581/10



581/11



581/12



581/13



581/14



581/15



581/16



582/2



582/3



582/4



582/5



582/6



582/7



582/8



582/9



582/10



582/11



582/12



582/13



582/14



582/15



582/16



582/17



582/18



582/19



582/20



582/21



582/22



582/23





582/24



582/25



582/26



582/27



582/28



582/29



582/30



582/31



582/32



582/33



582/35



582/36



582/37



582/38



582/39



582/40



582/41



582/42



582/43



582/44



582/45



582/46



582/47



582/48



582/49



582/50



582/51



582/52



582/53





582/54



582/55



582/56



582/57



582/58



582/59



582/60



582/61



582/62



582/63



582/64



582/65



582/66



582/67



582/68



582/69



582/70



582/71



582/72



582/73



582/74



582/75



582/76



582/77



582/78



582/79



582/80



582/81



582/82



582/83



582/84



582/85





582/86



582/87



582/88



582/89



582/90



582/91



582/92



582/93



582/94



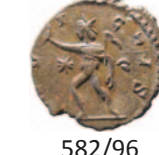
582/95



582/96



582/97



582/98



582/99



582/100



582/101



582/102



582/103



582/104



582/105



582/106



582/107



582/108



582/109



582/110



582/111



582/112



582/113



582/114



582/115



582/116



582/117





582/118



582/119



582/120



582/121



582/122



582/123



582/124



582/125



582/126



582/127



582/128



582/129



582/130



582/131



582/132



582/133



582/134



582/135



582/136



582/137



582/138



582/139



582/140



582/144



582/145



582/146



582/147



582/148



582/149



582/150





582/151



582/152



582/153



582/154



582/155



583/1



583/2



583/3



583/4



583/5



583/6



583/7



583/8



583/9



583/10



583/11



583/12



583/13



583/14



583/15



584/1



584/2



584/3



584/4



584/5



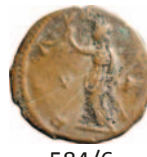
584/6



584/7



584/8



584/9



584/10





584/11



584/12



584/13



584/14



584/15



584/16



584/17



584/18



584/19



584/20



585/1



585/2



585/3



585/4



585/5



585/6



585/7



585/8



586/1



586/2



587/1



587/2



588/2



588/3



588/4



588/5



588/6



588/7





588/8



588/9



588/10



588/11



588/12



588/13



588/14



588/15



588/16



588/17



588/18



588/19



588/20



588/21



588/22



588/23



588/24



588/25



588/26



588/27



588/28



588/29



588/30



588/31



588/32



588/33



588/35



588/36



588/37



588/38



588/39



588/40





588/41



588/42



588/43



588/44



588/45



588/46



588/47



588/48



588/49



588/50



588/51



588/52



588/53



588/54



588/55



588/56



588/57



588/58



588/59



588/60



588/61



588/62



588/63



588/64



588/65



588/66



588/67



588/68



588/69



588/70



588/71



588/72





588/73



588/74



588/75



588/76



588/77



588/78



588/79



588/80



588/81



588/82



588/83



588/84



588/85



588/86



588/87



588/88



588/89



588/90



588/91



588/92



588/93



588/94



588/95



588/96



588/97



588/98



588/99



588/100



588/101



588/102



588/103



588/104





588/105



588/106



588/107



588/108



588/109



588/110



588/111



588/112



588/113



588/114



588/115



588/116



588/117



588/118



588/119



588/120



588/121



588/122



588/123



588/124



588/125



588/126



588/127



588/128



588/129



588/130



588/131



588/132



588/133



588/134



588/135





588/136



588/137



588/138



588/139



588/140



588/141



588/142



588/143



588/144



588/145



588/146



588/147



588/148



588/149



588/150



588/151



588/152



588/153



588/154



588/155



588/156



588/162



588/163



588/164



588/165



588/166



588/167



588/168



588/169



588/170



588/171





588/172



588/173



588/174



588/176



588/177



589/1



589/2



589/3



589/4



589/5



589/6



590/1



590/2



590/3



590/4



590/5



590/6



590/7



590/8



590/11



590/12



590/13



590/14



590/15



590/16



590/17



591/1



591/2



592/1



592/2



592/3



593/1





593/2



593/3



594/2



594/3



594/4



594/5



594/6



594/7



594/8



594/9



594/10



594/11



594/12



594/13



594/14



594/15



594/16



594/17



594/18



594/19



594/20



594/21



594/22



594/23



594/24



594/25



594/26



594/27



594/28



594/29





594/30



594/31



594/32



594/33



594/34



594/35



594/36



594/37



594/38



594/39



594/40



594/41



594/42



594/43



594/44



594/45



594/46



594/47



595/2



595/3



595/4



595/5



595/6



595/7



595/8



595/9



595/10



595/11



595/12



595/13



595/14





595/15



595/16



595/17



595/18



595/19



595/20



595/21



595/22



595/23



595/24



595/25



595/26



595/27



595/28



595/29



595/30



595/31



595/32



595/33



595/34



595/35



595/36



595/37



595/38



595/39



595/40



595/41



595/42



595/43



595/44



595/45



595/46



